



Winston-Salem Cycling

TECHNICAL GUIDE

August 4, 5 & 6, 2023



Table of Contents

Page 1: Cover Page

Page 2: Table of Contents

Page 3: Event Organizing Committee & Production Team

Page 4: Registration

Page 5: Streets of Fire Sprint p/b Flow Automotive

Page 6: Gears and Guitars Criterium

Page 7: Road Fondo & Gravel Fondo p/b Flow Automotive

Page 8: General Information

Pages 9 & 10: Street Sprints & Criterium Prizes

Page 11: Race Course Maps

EVENT PERSONNEL & PRODUCTION TEAM 2023

Executive Director	Dr Richard Rauck
Race Director	Raymond Boden
Executive Committee	Sterling Swaim, Katie Rauck, Carolynn Berry, Michael Berry, Mike Robinson, Angela Carleton, Greg Ralston, Lisa Linebeck, William Oakes
Sponsorship	Lisa Linebeck, Raymond Boden
Administration	Helen Rein , Lynn Berry
Host Housing	Angela Carleton
Race Registration	Jim Smalley – Mountain Events
Social Media	Raymond Boden
Event Logistics, Awards Coordinator	Sterling Swaim, Michael Hosey
Event Coordinators	Brian Clarke, Bill Oakes, Greg Testa
Operations Coordinator	Greg Testa
Anti-Doping Coordinator	Bill Oakes
Medical	Dr Jonathan Kelly
Pro Teams Liaison	Thad Fischer
Equipment & Technical Services/Timing	Swagger LLC
Announcers/Color Commentators	Frankie Andreu & Chad Andrews
USAC Chief Referee	Brent Lyons
USAC Chief Judge	TBD
USAC Moto Referees	TBD
USAC Pit Judge	TBD
USAC Pit Judge	TBD

REGISTRATION INFORMATION

Pre- Registration is now open at: [Winston Salem Cycling Classic & Gears and Guitars Online Registration \(bikereg.com\)](https://www.bikereg.com)

AMATEUR CATEGORIES REGISTRATION

Amateur Categories may register online at [bikereg.com](https://www.bikereg.com). Amateur Categories and Pro riders may register onsite starting Saturday morning August 5th at 7:30 AM. Registration closes 30 minutes before the start of each category and will be located in the parking lot behind the start/finish stage on 5th Street.

*Day-of entries will incur a \$10 late fee

One-day licenses are available for purchase for \$10/day to categories open to cat 5 men and cat 5 women. Experienced racers may purchase a one-day through their USAC account.

Fondo Registration

Includes a complimentary t-shirt (while supplies last), one beer coupon (21+), and a lunch voucher for redemption at any food truck.

\$55 until May 15

\$60 May 16 – June 15 (for Jersey orders)

\$65 After July 1st

PRO REGISTRATION

The professional criterium is invitational in nature and is open to Pro/1/2/3 Women and Pro/1/2/3 Men. Teams may have a maximum of six riders. Please email Thad Fischer @ fcecorp99@yahoo.com for more details. Pro

Pro riders will be issued a transponder timing chip that will need to be placed on the right side of the rider's front fork.

Each racer must present a valid 2023 racing license issued by their country's cycling governing body or by the UCI. All racers will need to fill out and sign a USA Cycling release form if registering on-site. Wet signatures are required onsite.

Promoter reserves the right to combine fields or reduce prize money if field minimums are not met. Prize list will be reduced by % of minimum field not met. All races are held rain or shine. No refunds. Sanctioned by USA CYCLING. For more information, email boden@winstonsalemopen.com.

NUMBER PLACEMENT

Numbers need to be pinned on the right side. Pro racers will race with 2 numbers. Pin those 1 on the right and one on the pockets.



Streets of Fire Sprint Races Presented by Flow Automotive – Friday August 4th, 2023

Start Location: [500 block of 4th Street](#) (Corner of Poplar and 4th)

Finish Location: [200 block of 4th Street](#) (Corner of Trade and 4th)

Racer Staging: Parking lot behind Lowey building near the corner of Spruce and 4th

Racer Parking: 4th Street Parking Deck (Corner of Poplar and 4th)

FRIDAY NIGHT MIXER: Finger Food and Beverages for all Sprint Race Participants. Located near the Registration Tent. Please join in the fun! 7:00 PM to 9:00 PM

First Heat: 7:00 PM **Total Purse:** \$1,900

Categories: Men Open, Men Cat 4/Novice, Men Cat 3, Men Pro/Cat 1 & 2, Women Open, Women 3/4/5, Women Pro Cat 1/2/3

The sprint course is 200 meters in length. Riders will sprint from a standing start, the distance, side-by-side. Heats will be elimination-style with groups of 4-6 riders per heat. Heats will be assigned by category (male/female, age, race category) based on pre-registrations. Your first heat will be provided at the racer sign-in area located near the start line at the corner of Poplar and 4th.

Race Category	Start Time	Duration	Finals/Prizes/Places	Entry Fee	Field Limit
Streets of Fire Sprint Races p/b Flow Automotive Men Open - NON USAC Riders	7:00 PM	200 Meters	Awards	\$20	25
Streets of Fire Sprint Races p/b Flow Automotive Men Cat 4/Novice	7:00 PM	200 Meters	\$300/3	\$20	25
Streets of Fire Sprint Races p/b Flow Automotive Men Cat 3	7:00 PM	200 Meters	\$300/3	\$20	25
Streets of Fire Sprint Races p/b Flow Automotive Men Pro/Cat 1/2	7:00 PM	200 Meters	\$500/5	\$20	25
Streets of Fire Sprint Races p/b Flow Automotive Women Open - NON USAC Riders	7:00 PM	200 Meters	Awards	\$20	25
Streets of Fire Sprint Races p/b Flow Automotive Women Cat 3/4/Novice	7:00 PM	200 Meters	\$300/3	\$20	25
Streets of Fire Sprint Races p/b Flow Automotive Women Pro/Cat 1/2/3	7:00 PM	200 Meters	\$500/5	\$20	25

Registration: Registration for all racer categories for Friday night is \$20 in advance.

You MUST pre-register online to race. Online registration will close at 5:00 PM on Wednesday, August 2nd. There will be no onsite registration for the Sprint Races.

Exact sprint format will be determined after sprint registration closes in order to know the number of participants in each category.

Gears and Guitars Criterium – September 5th, 2023

Amateur Criterium Racing: 9:10 AM – 5:10 PM - **Professional Criterium Racing:** 5:30 PM – 8:15 PM

Race Routes: **Course 1:** <https://ridewithgps.com/routes/39158196> **Course 2:** <https://ridewithgps.com/routes/39158174/C>

(1) Entry fees increase by \$10 after 6PM on Friday, August 4, 2023

(2) Courtesy of Novant Health Women’s Health

(3) Courtesy of Riazzi Rhyne & Swaim Investment Group

Race Category	Start Time	Duration	Prizes/Places	Entry Fee	Field Limit	Route
Gears and Guitars Criterium Juniors 9-14	9:10 AM	30 Mins	Medals	\$20	75	1
Gears and Guitars Criterium Juniors 15-16	9:10 AM	30 mins	Medals	\$20	75	1
Gears and Guitars Criterium Men's Cat 4/Novice	9:50 AM	30 Mins	\$250/3	\$30	75	1
Gears & Guitars Criterium Women Cat 4/Novice	10:30 AM	30 Mins	\$250/3	\$30	75	1
Gears and Guitars Criterium Master's 55+	11:10 AM	30 Mins	\$300/3	\$40	100	1
Gears and Guitars Criterium Master's 45+	11:10 AM	30 Mins	\$300/3	\$40	100	1
Gears and Guitars Criterium Women's Cat 3/4	12:00 PM	40 Mins	\$300/3	\$40	100	2
Gears and Guitars Criterium* Juniors 15-16 (Cat 1/2/3)	12:40 PM	40 Mins	\$1,000/10	\$20	100	2
Gears and Guitars Criterium* Juniors 17-18 (Cat 1/2/3)	12:40 PM	40 Mins	Combined Above	\$20	100	2
Gears and Guitars Criterium Master's 35+	2:40 PM	40 Mins	\$300/3	\$40	100	2
Gears and Guitars Criterium Men’s Cat 3/4	3:30 PM	45 Mins	\$300/3	\$40	100	2
Gears and Guitars Criterium Men's Cat 2/3	4:20 PM	45 Mins	\$400/3	\$40	100	2
Gears and Guitars Criterium Women's Pro Cat 1/2/3	5:30 PM	60 Mins	\$12,500/25		125	2
Gears and Guitars Criterium Men's Pro Cat 1/2/3	7:00 PM	75 Mins	\$12,500/25		125	2

Gears and Guitars Road Fondo Presented By Flow Automotive

Location: [445 Patterson Avenue, Winston-Salem](#)

Onsite Registration Opens: 6:30 AM

68 Mile Fondo Departure: 7:30 AM

42 Mile Fondo Departure: 8:00 AM

Food trucks available: 11:00 AM - 3:00 PM

Join us for a kickoff at our race headquarters downtown at Bailey Park. Two road distance options will take you out of town and into our beautiful scenic backroads around Lake Tomalex, and get you back in time for a complimentary beer (21+) and lunch from one of a variety of food trucks on site.

Road Route Links:

68 Mile Fondo (2 rest stops)

<https://ridewithgps.com/routes/40533927>

42 Mile Fondo Departure (1 rest stop) <https://ridewithgps.com/routes/40549857>

Registration – Registration for ALL Fondos Includes a free Gears & Guitars 2023 t-shirt (while supplies last), one drink coupon (beer for 21+), and a lunch voucher for redemption at any food truck.

\$55 until May 15th

\$60 May 16 – July 1st (cutoff date for Jersey orders)

\$65 After July 1st

Gears and Guitars Gravel Ride presented by Flow Automotive

Location: [445 Patterson Avenue, Downtown Winston-Salem](#)

Onsite Registration Opens: 9:00 AM

Greenway/Gravel Departure: 10:00 AM

Food trucks available: 11:00 AM - 3:00 PM

Final schedule subject to change

The journey along the Long Branch Trail and Salem Creek Greenway allows participants to turn around at any point along the route or travel all the way out and around along the Salem Lake trail, one of Winston Salem's most enjoyable rides. Two options for this ride include:

1. Greenway: Long Branch Trail to Salem Creek Greenway to Salem Lake or water crossing and return (7 miles, 1 rest stop)
2. Greenway/Gravel: Long Branch Trail to Salem Creek Greenway and around Salem Lake and return (15 miles, 1 rest stop)

Greenway / Gravel route link:

<https://ridewithgps.com/routes/38970029>

GENERAL INFORMATION

PRO RACE STAGING

Staging for riders will be 100 meters before the start line. Enter from the final turn.

PRO RACE CALL-UPS

Call-ups will be based on the following criteria:

Past WSCC Criterium Winners

Others as determined by the race committee

PARKING

Parking is available at various city lots. There is no reserved parking for teams for the criterium. The lot at Chestnut & 4th is free on the weekends.

NEUTRAL SUPPORT

Neutral support is provided by Swagger Services. Free lap rule is in effect until 8k to go. Free lap rule for Course 1 ends on lap 7 and for Course 2 ends on lap 6.

PODIUMS

Podiums are adjacent to the start/finish line immediately after the protest period. Pro Women and Pro Men podiums will be held immediately following the finish of the Pro Men's race. Top 3 from each Pro Women and Pro Men should be present and in team cycling apparel. If you are selected for USADA Anti-Doping Examination, please attend the Awards Ceremonies before going for testing. Your chaperone will remain with you.

MEDICAL

MEDICAL CONTROL

All USA Cycling-sanctioned events are subject to USADA Anti-Doping Examination. All competitors and team personnel must abide by these regulations. Any rider found positive will forfeit all prizes won at the event. The list of riders required to report will be posted at the start/finish stage. The riders will be required to report to medical control within a reasonable time after the awards and protocol ceremonies. It is the responsibility of the rider and/or their team personnel to insure that they report to Anti-Doping within the required time. USADA chaperones will escort you to the testing room. Please note! The awards for both men and women are held directly after the finish of the men's race. Top 3 riders from each event must report to the finish area immediately after the Men's Pro Race. Please participate in the awards ceremony before reporting for testing. Your USADA chaperone will stay with you. If USADA is present and testing occurs, payout will be sent out after 30 days.

HOSPITAL INFORMATION

Wake Forest Baptist Medical Center
1 Medical Center Blvd
Winston-Salem, NC
336-716-2011

STREET SPRINTS PAYOUT

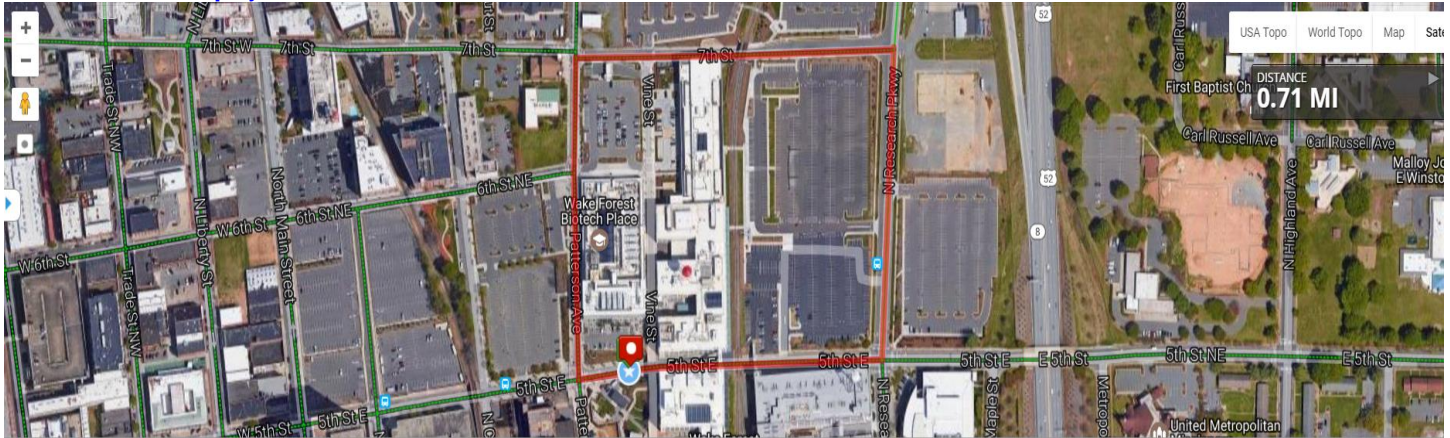
	PRO WOMEN Cat 1, 2 & 3	WOMEN Cat 3, 4 & 5	WOMEN Open Non USAC	PRO MEN Cat 1 & 2	MEN Cat 3	MEN Cat 4/Novice	MEN Open Non USAC
	\$500	\$300	Prizes	\$500	\$300	\$300	Prizes
1	\$150	\$150	Awards	\$150	\$150	\$150	Awards
2	\$125	\$90	Awards	\$125	\$90	\$90	Awards
3	\$100	\$60	Awards	\$100	\$60	\$60	Awards
4	\$75			\$75			
5	\$50			\$50			

CRITERIUM PAYOUT

	PRO MEN	PRO WOMEN	MEN 3	35+	45+	55+	MEN 4/5	WOM 3	WOM 3/5	JR 9-14	JR 15-16	JR 15-16	JR 17-18
	\$11,500	\$11,500	\$300	\$300	\$300	\$300	\$250	\$300	\$250	MEDALS	MEDALS	Combined	\$1000
PRIMES	\$1,000	\$1,000											
1	\$1,000	\$1,000	\$150	\$150	\$150	\$150	\$125	\$150	\$125	Medals	Medals		200
2	\$800	\$800	\$90	\$90	\$90	\$90	\$75	\$90	\$75	Medals	Medals		165
3	\$700	\$700	\$60	\$60	\$60	\$60	\$50	\$60	\$50	Medals	Medals		130
4	\$675	\$675											110
5	\$650	\$650											95
6	\$625	\$625											80
7	\$600	\$600											70
8	\$575	\$575											60
9	\$550	\$550											50
10	\$525	\$525											40

COURSE MAPS

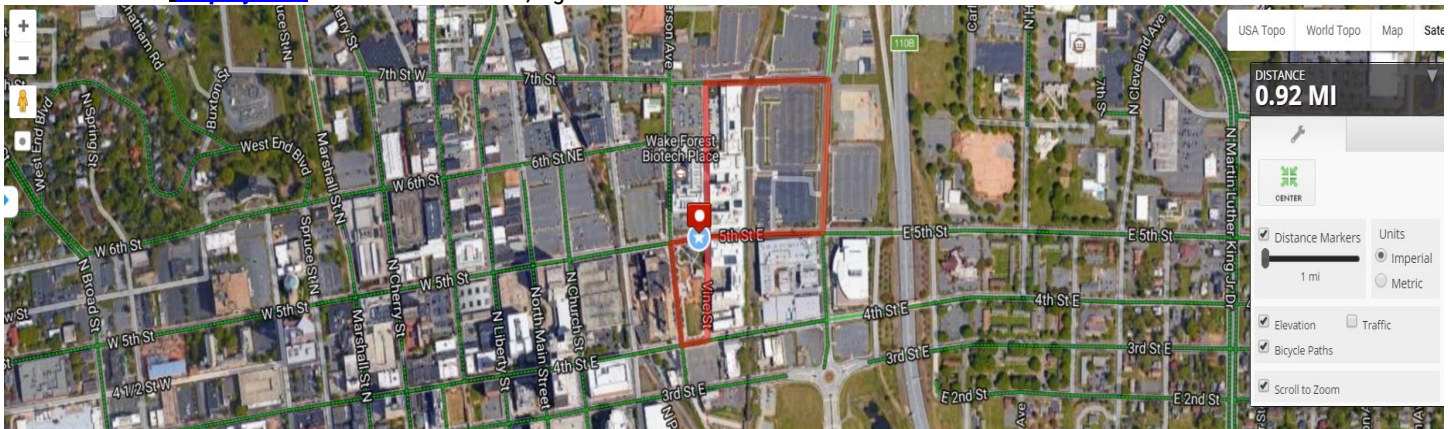
COURSE MAP 1 [MapMyRide](#) The course is 1.1 km



Elevation [Show elevation with grades](#)



COURSE MAP 2 [MapMyRide](#) The course is 1.4 km, figure 8



Elevation [Show elevation with grades](#)



